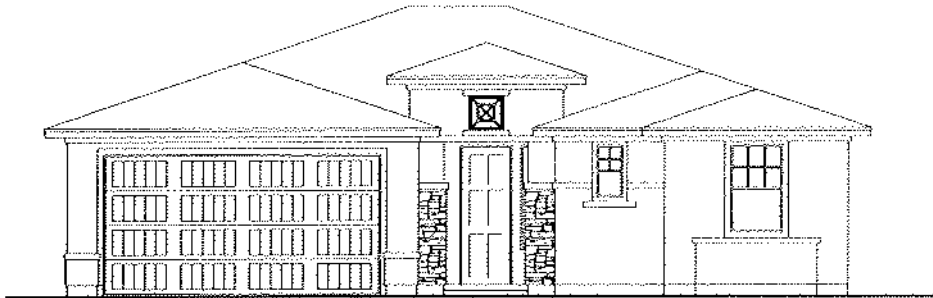
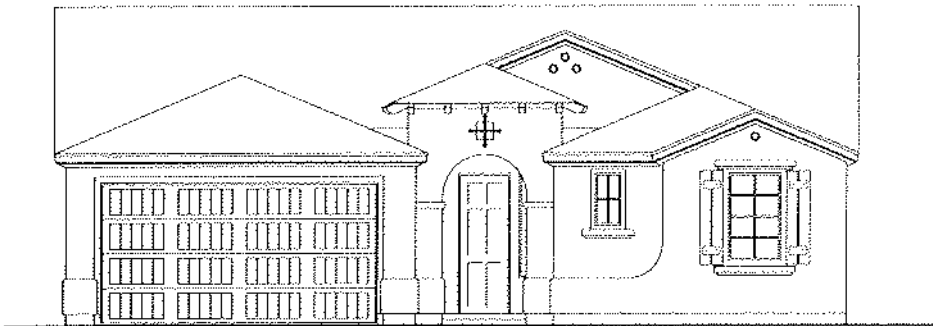


Elevation "A"

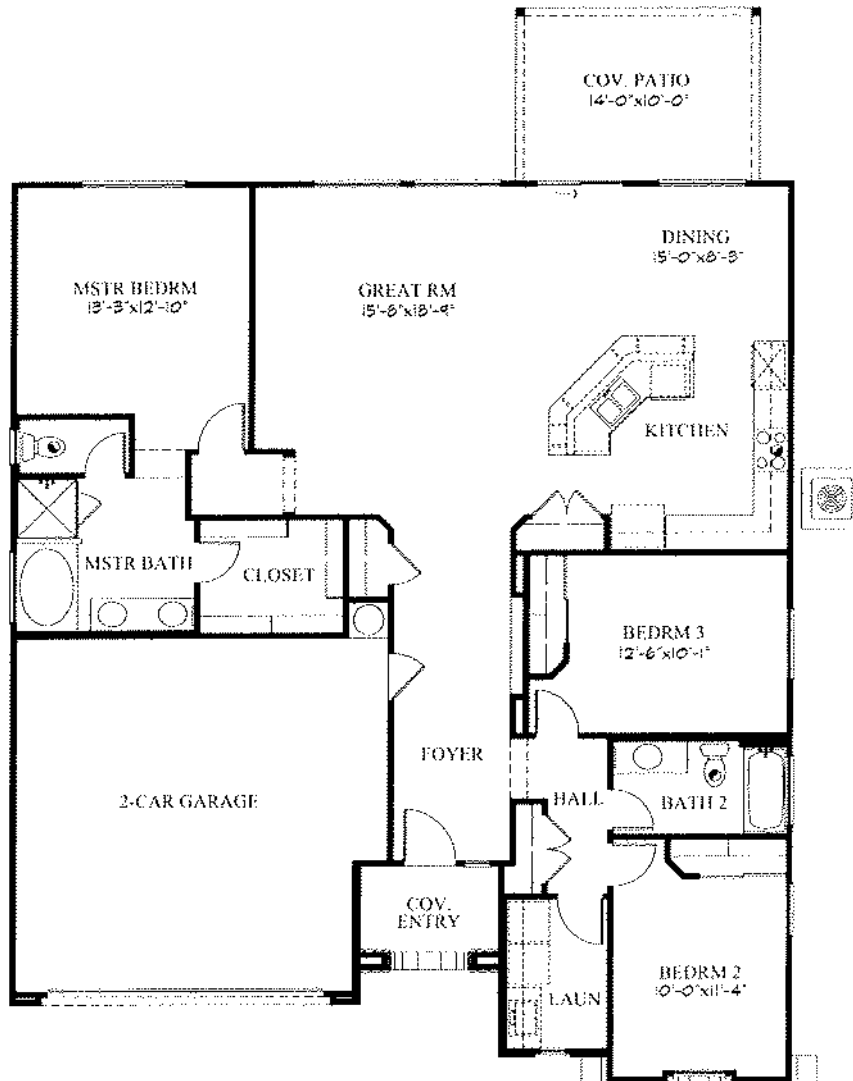


Elevation "B"



Elevation "C"

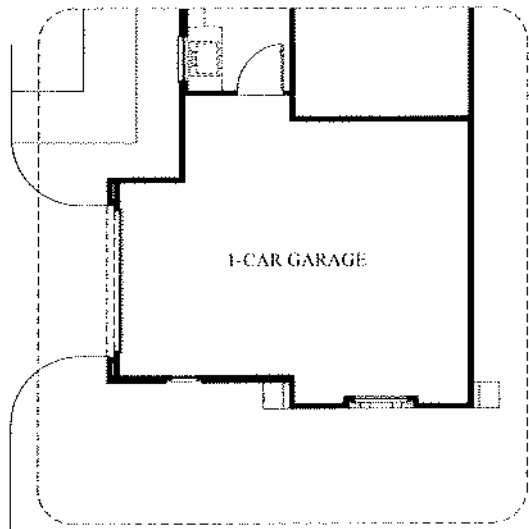
La Paz
(1679 s.f.)



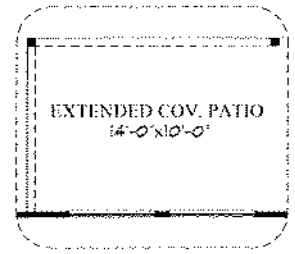
La Paz

(1679 s.f.)

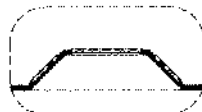




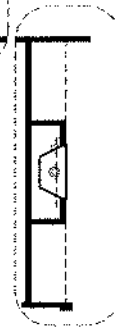
OPTIONAL 1-CAR GARAGE



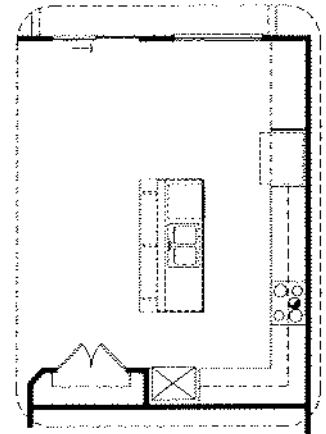
OPT. EXTENDED COV. PATIO



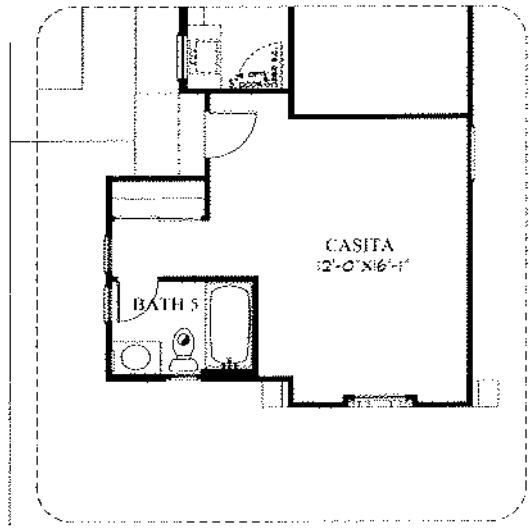
OPT. BAY @ MSTR



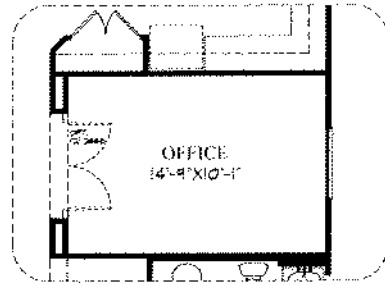
OPT. FIREPLACE/MEDIA NICHES



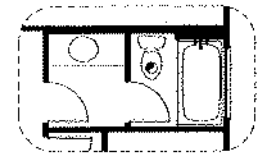
OPT. ALTERNATE KITCHEN



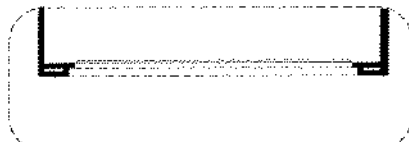
OPTIONAL CASITA



OPTIONAL OFFICE



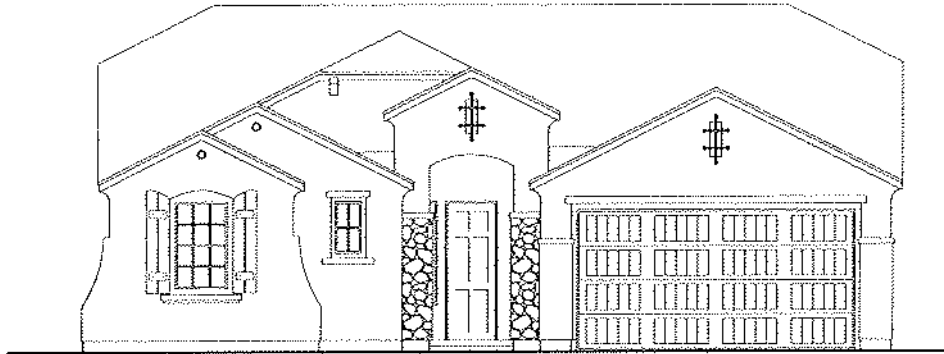
OPT. COMPARTMENT BATH



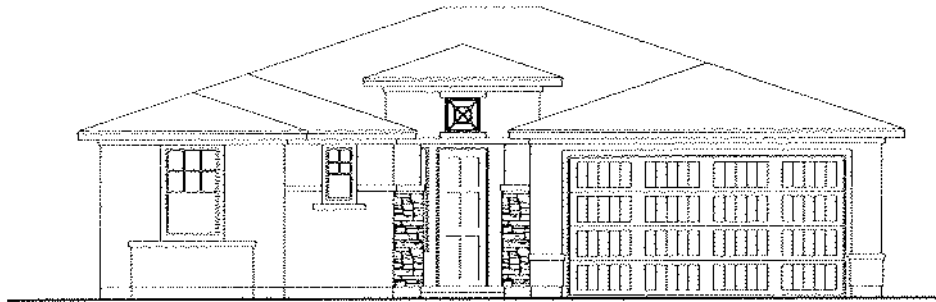
OPT. 2' GARAGE EXTENSION

La Paz (1679 s.f.)

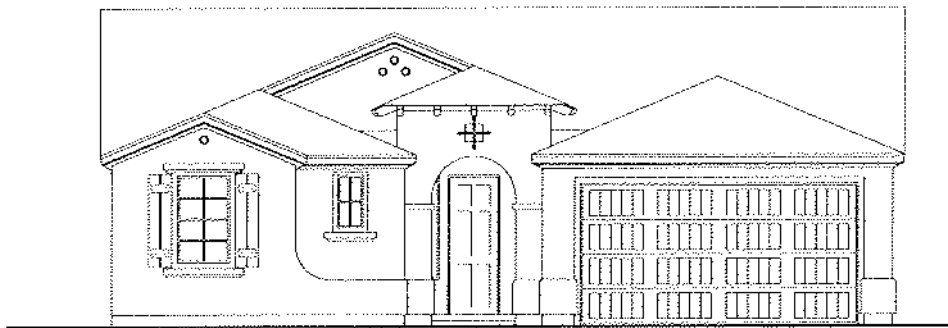




Elevation "A"

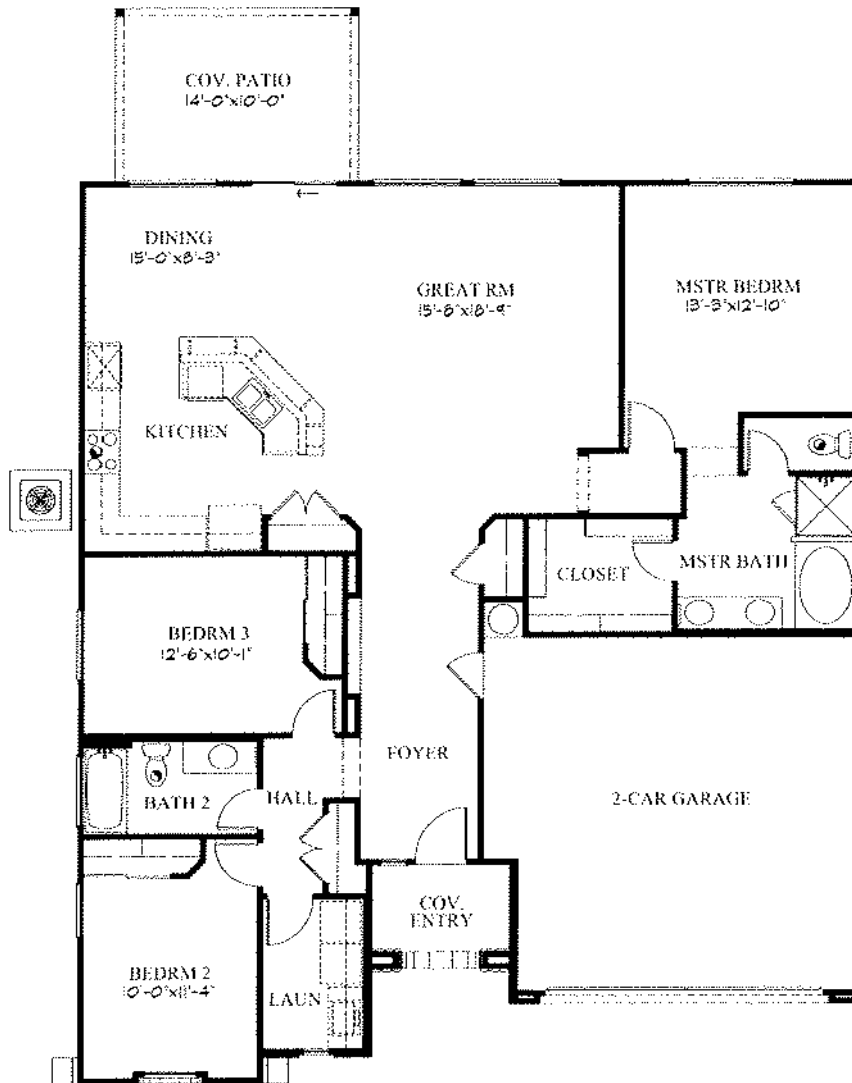


Elevation "B"



Elevation "C"

La Paz
(1679 s.f.)



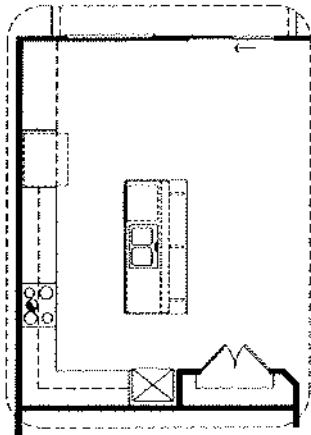
La Paz

(1679 s.f.)

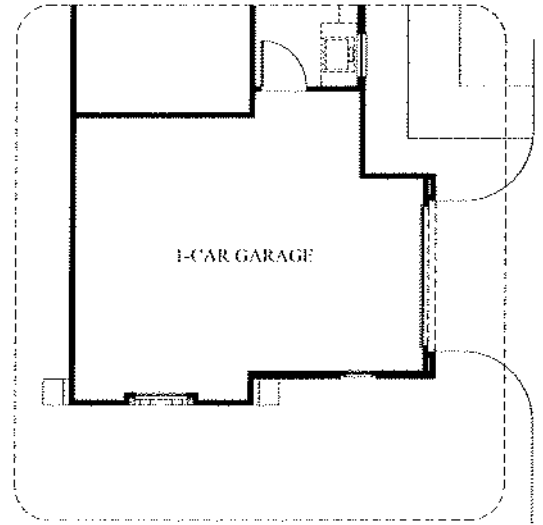
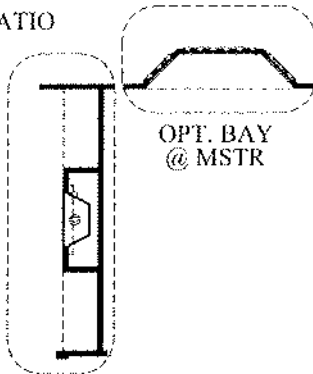




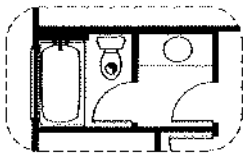
OPT. EXTENDED COV. PATIO



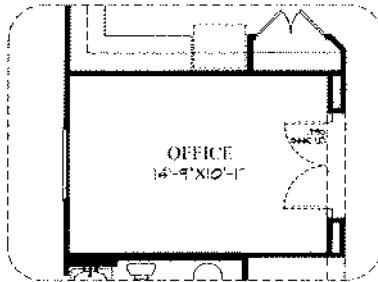
OPT. ALTERNATE KITCHEN



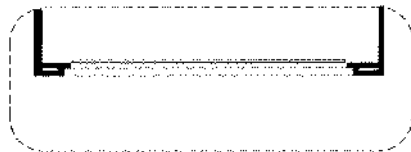
OPTIONAL 1-CAR GARAGE



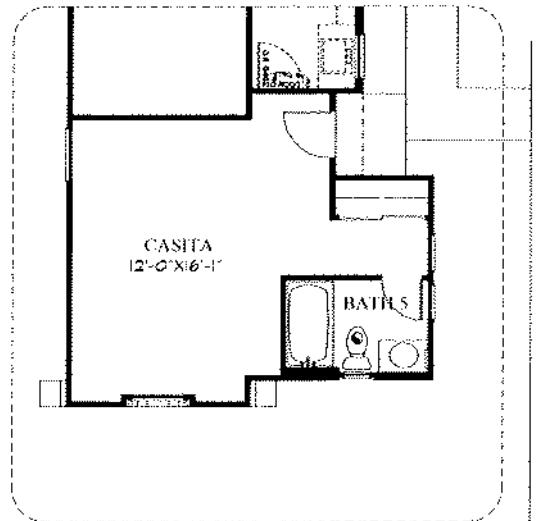
OPT. COMPARTMENT BATH



OPTIONAL OFFICE



OPT. 2' GARAGE EXTENSION



OPTIONAL CASITA

La Paz (1679 s.f.)

